

Investigation of soft stimulation measures from a techno-economic point of view under consideration of risk factors >

GeoTHERM 2019

Sören Welter, Dorothee Siefert, Elif Kaymakci, Thomas Kölbl
15. February 2018

DESTRESS

Stimulation of geothermal wells with a minimum environmental impact

Key facts:

Demonstration of stimulation measures within the EU H2020-program

- > 16 partners from the EU, Switzerland and South Korea
- > 5 „demonstration sites“
- > Mezöberény (HR), Soultz-sous-Forêts (FR), Middenmeer (NL), Geldinganes (IS), Bedretto (CH)
- > 48 months – March 2016 – February 2020

Research goals:

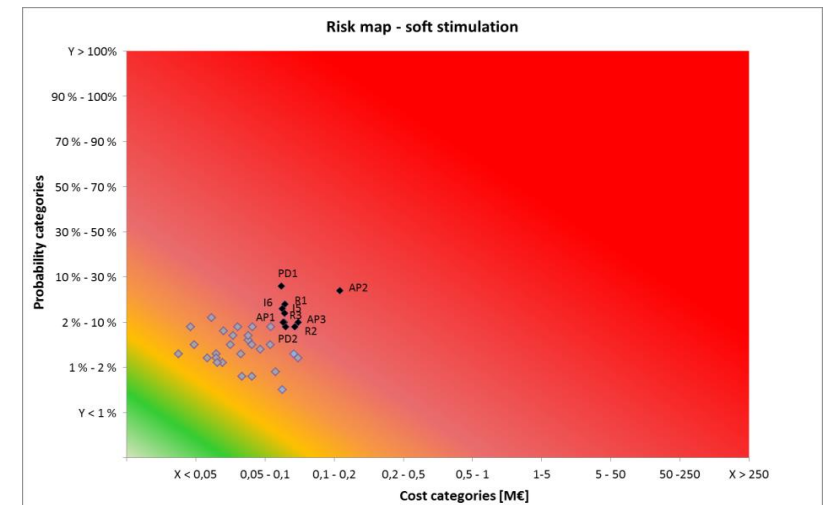
Reservoir improvement

Preservation of injectivity

Minimizing environmental impact

Project status

- > Modelling of stimulation activities is done and published
- > Planning and tendering of stimulation activities are currently done
- > Stimulations will be performed in 2019

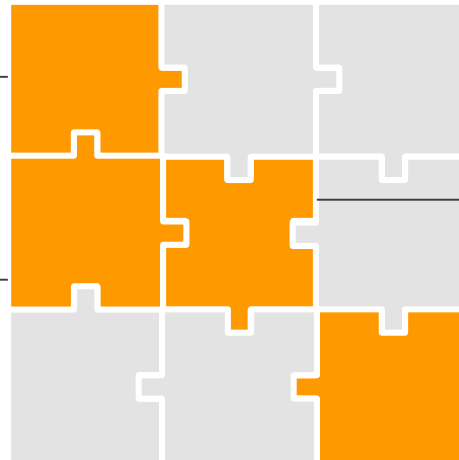


1. Technical modelling

- › Simulation/optimization of geothermal plant
 1. Production reservoir
 2. Wellbore
 3. Thermal water circuit
 4. Energy utilization
 5. Wellbore
 6. Injection reservoir

3. Mapping of stimulation measures

- › Mapping of stimulation activities
 - Costs of different stimulation measures
 - Effect of stimulation on reservoir properties
 - Probability of success of stimulation measures



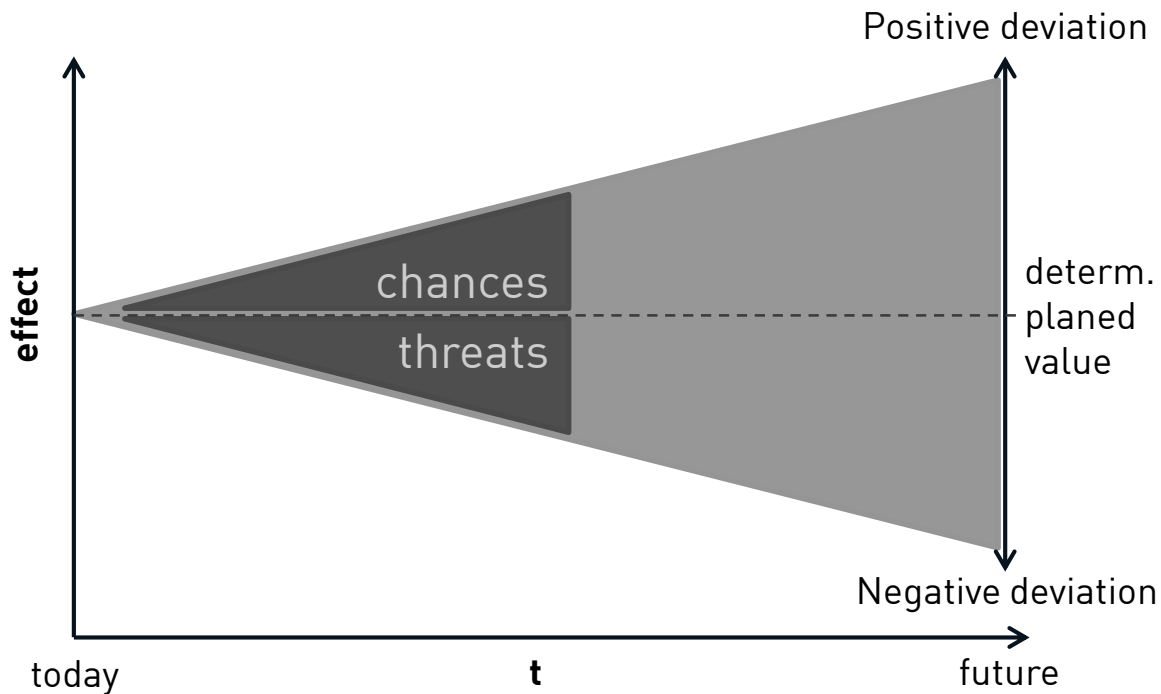
2. Economic modelling

- › Cost engineering based on technical input data
 - Module costing approach
 - Development of functions for specific geothermal items/services
 - Adaption to different European markets

4. Uncertainty/risk factors

- › Identification & evaluation of uncertainties/risk factors unique to stimulation activities
- › Uncertainties within techno-economic models

Why make it so complicated or advantages of probabilistic evaluation



> Sensitivity analysis

- Impact factors can be identified and evaluated
- Automatically available through Monte-Carlo-Sampling

> Robustness of results

- Unbiased by scenario definitions
- More/all uncertain parameters can be evaluated
- Interaction of different parameters can be considered



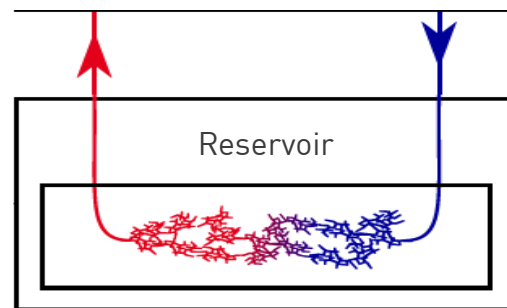
> More effort

- Collection of probability distribution functions
- Expert elicitation
- Historical data
- Setting up a techno-economic model

> More complex to present and understand

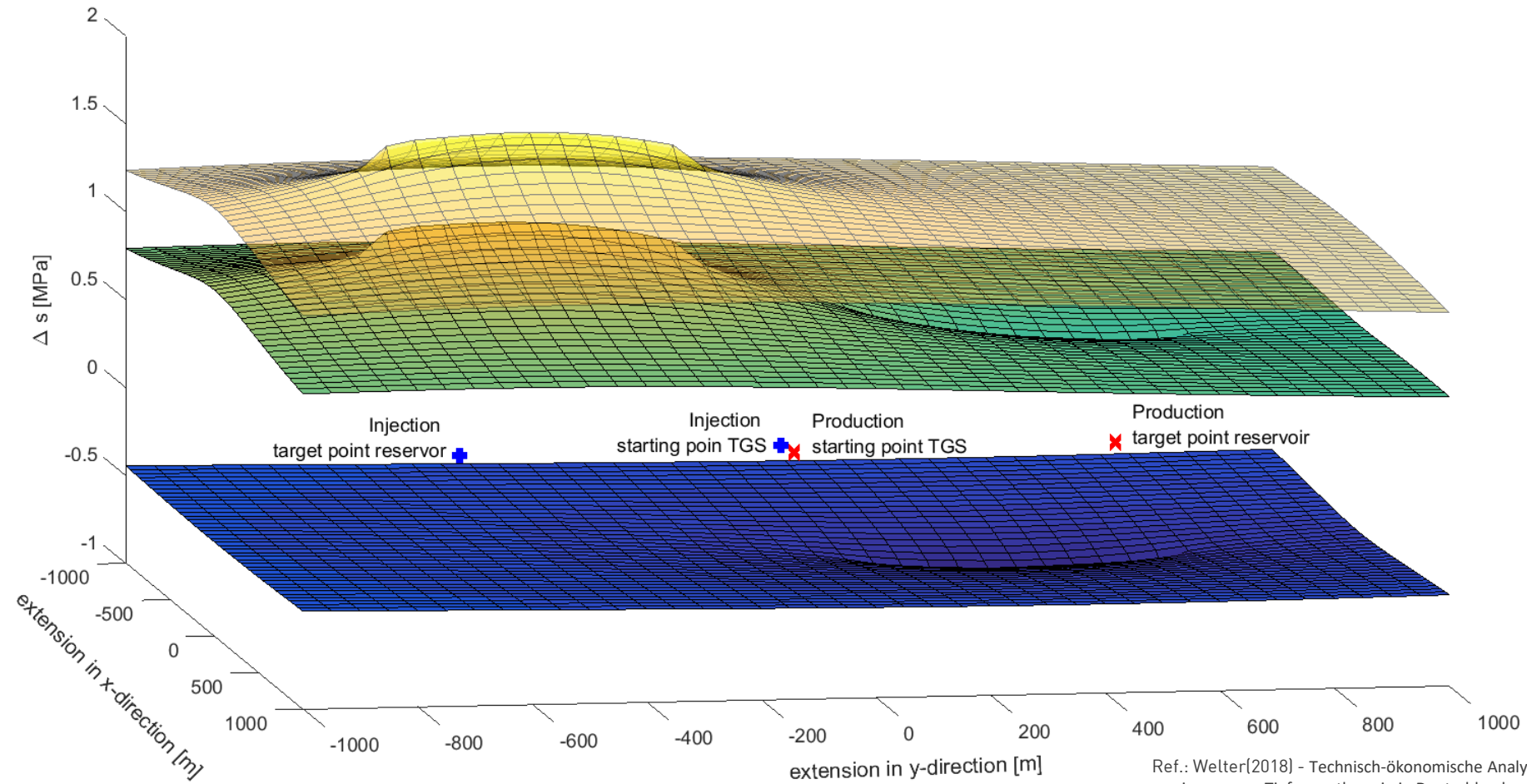
- Methodology of Monte-Carlo simulation
- Probabilistic KPIs

Integrated geothermal model (IGM)



Integrated geothermal model

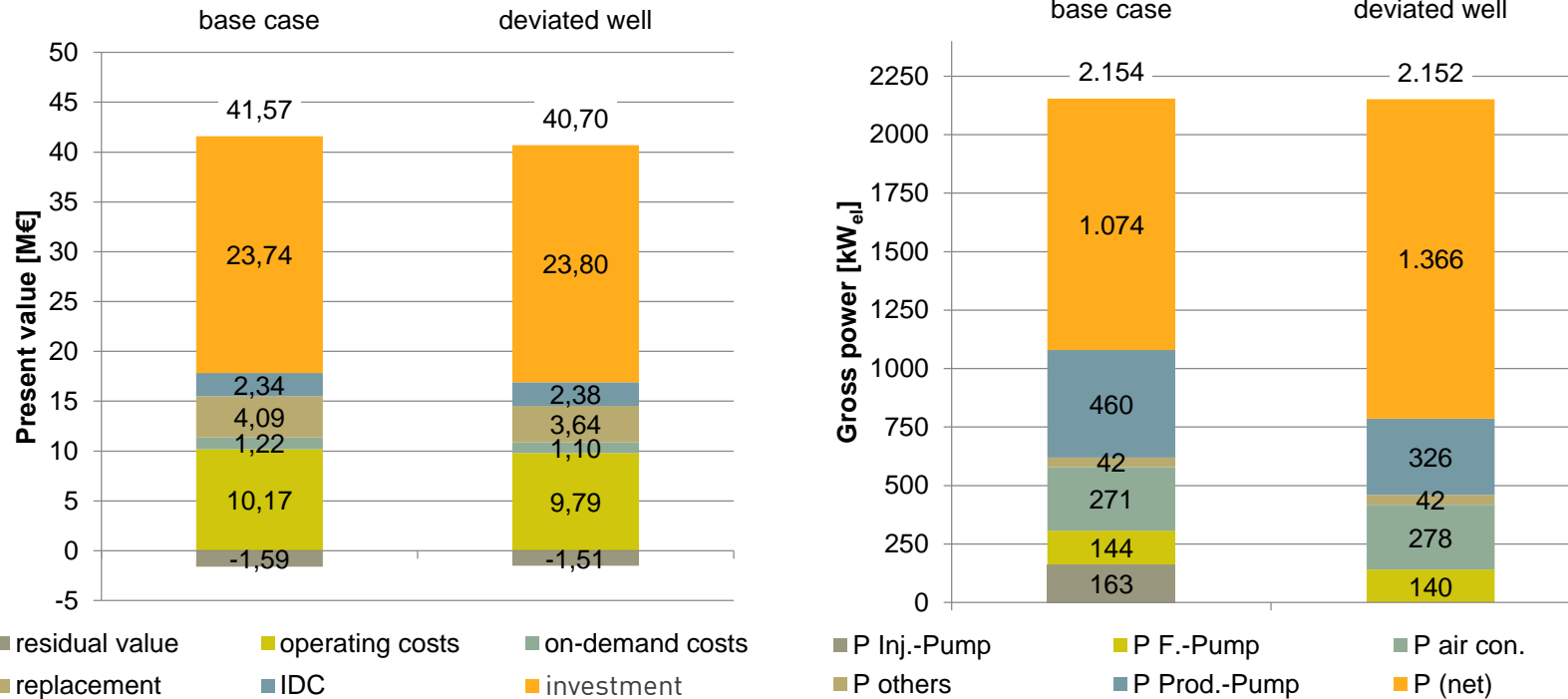
Hydraulic effects of deviated wells



Ref.: Welter(2018) - Technisch-ökonomische Analyse der Energiegewinnung aus Tiefengeothermie in Deutschland

Detailed evaluation of deviated wells

Techno-economic comparison of deviated wells to the base case



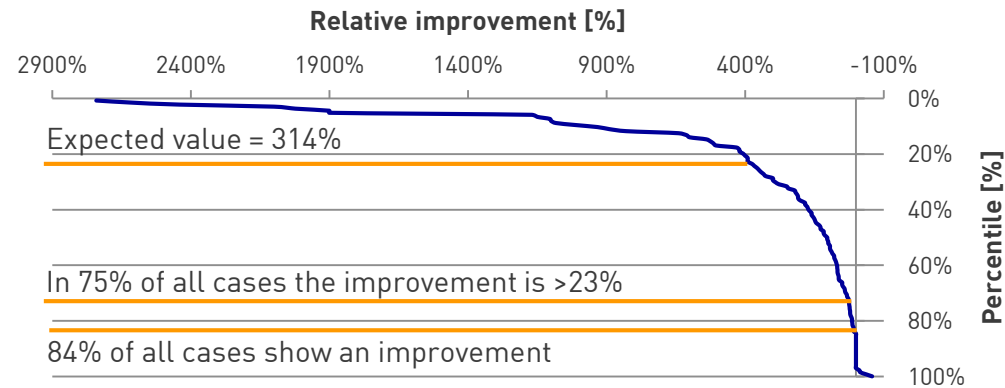
	Present value		Net power		Levelized costs of energy	
	[M€]	Δ-%	[kW]	Δ-%	[€/kWh]	Δ-%
Base case	42,13		1.076		0,21	
Deviated wells	41,31	-1,93%	1.370	27,29%	0,16	-22,97%

Ref.: Welter(2018) -
Technisch-ökonomische
Analyse der Energie-
gewinnung aus
Tiefengeothermie in
Deutschland

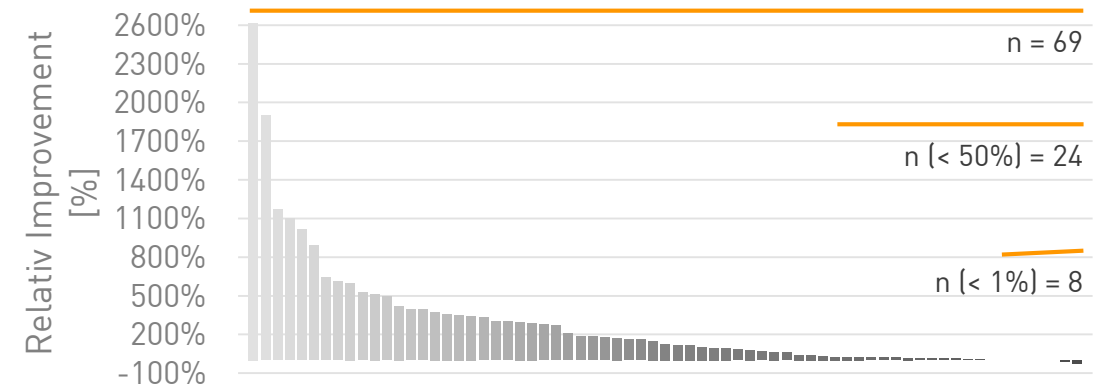
Probability of success

Statistical evaluation of geothermal stimulation measures worldwide

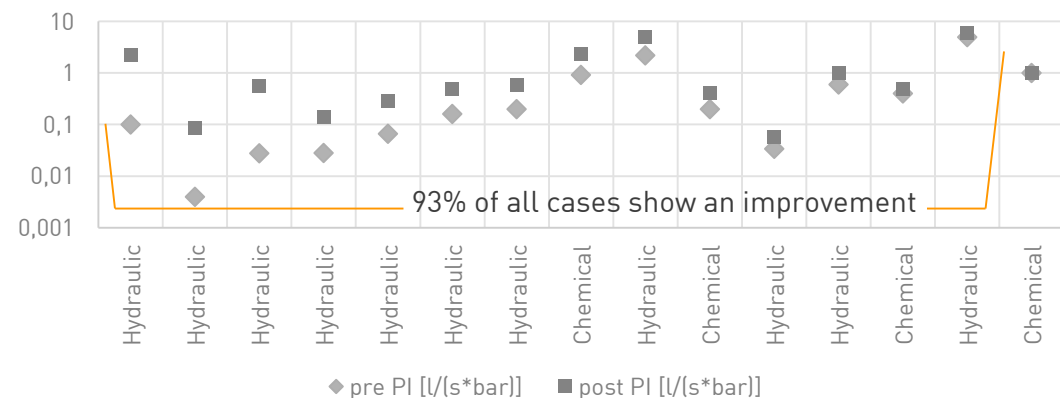
Relative improvement through stimulations



Stimulations with published II



Stimulations with published PI



Key messages

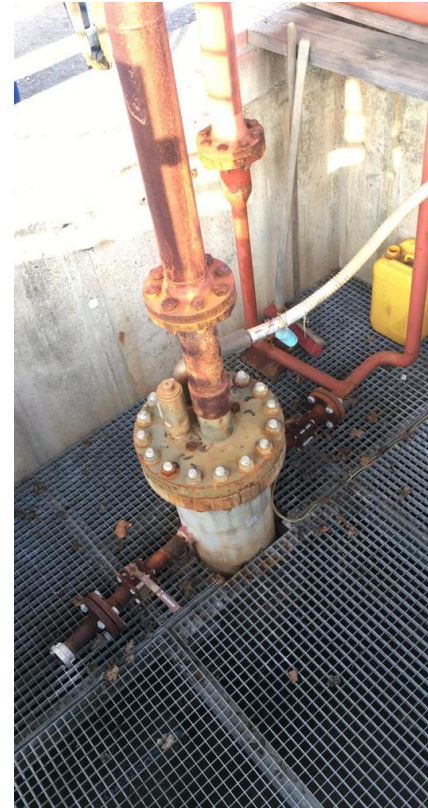
- Statistical evaluation of 181 geothermal stimulation jobs since 1970 in 15 countries
 - Growing number of cases increases validity of distribution function
- Relative Improvement shows a wide range depending on technical and geological issues
- Probability of having no or negative improvement is 26%
- For wells with published injectivity 88% show an improvement
- When focusing on stimulations with PI-data, the probability of no-effect decreases to 7%

Line Shaft Pump (e.g. Soultz-sous-Forêts)

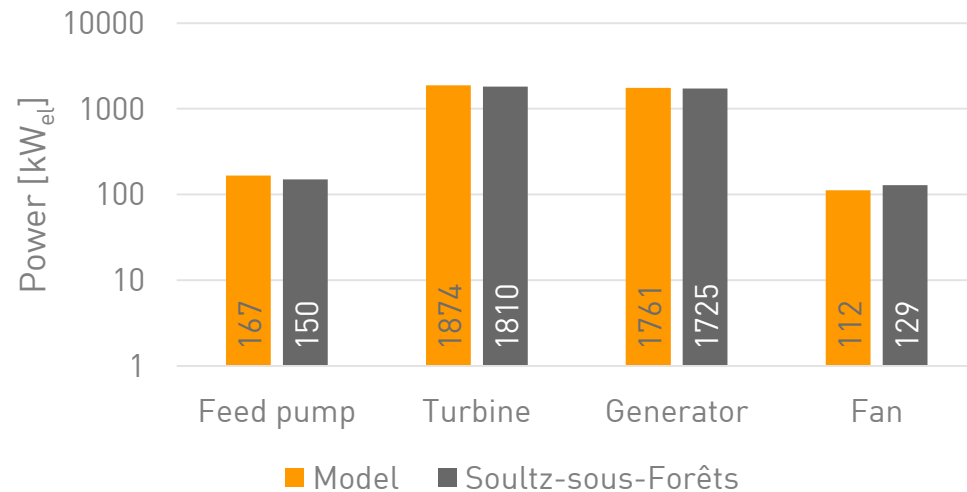
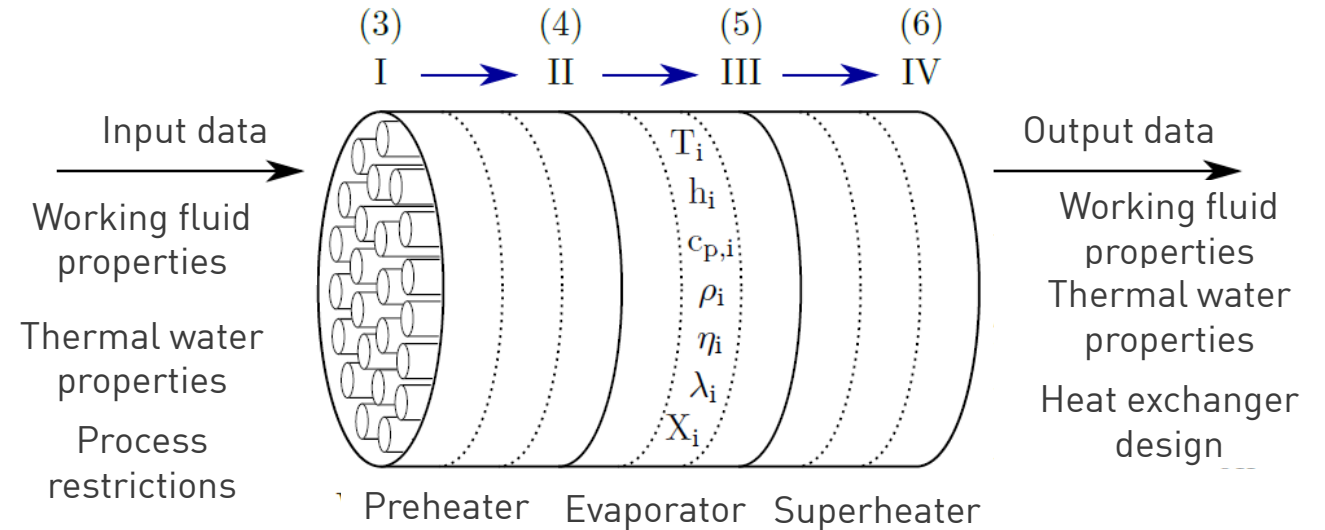
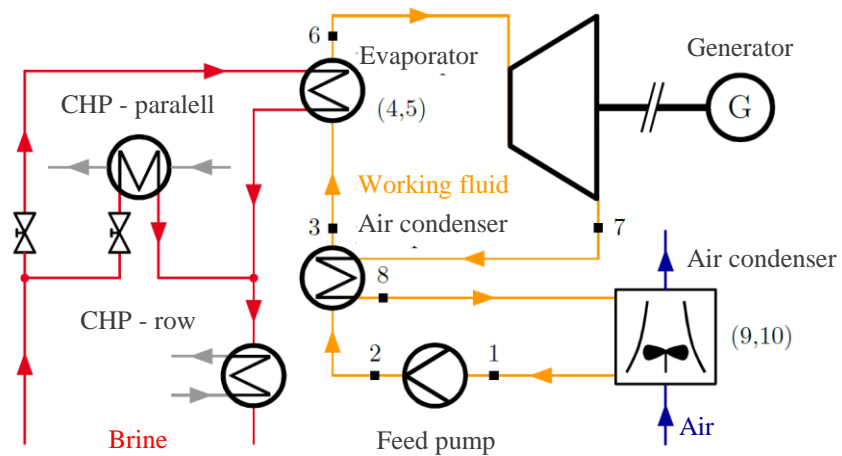


- +** Easy maintenance
 - Motor above ground
 - Line shaft drives turbine
- +** Longer service life
 - ~ 4 years
- More expensive
 - $CAPEX(z) = 775000 + 500 * z$
- +** Higher efficiency
 - ~ 70%
- Limited in depth
 - ~ 700 m

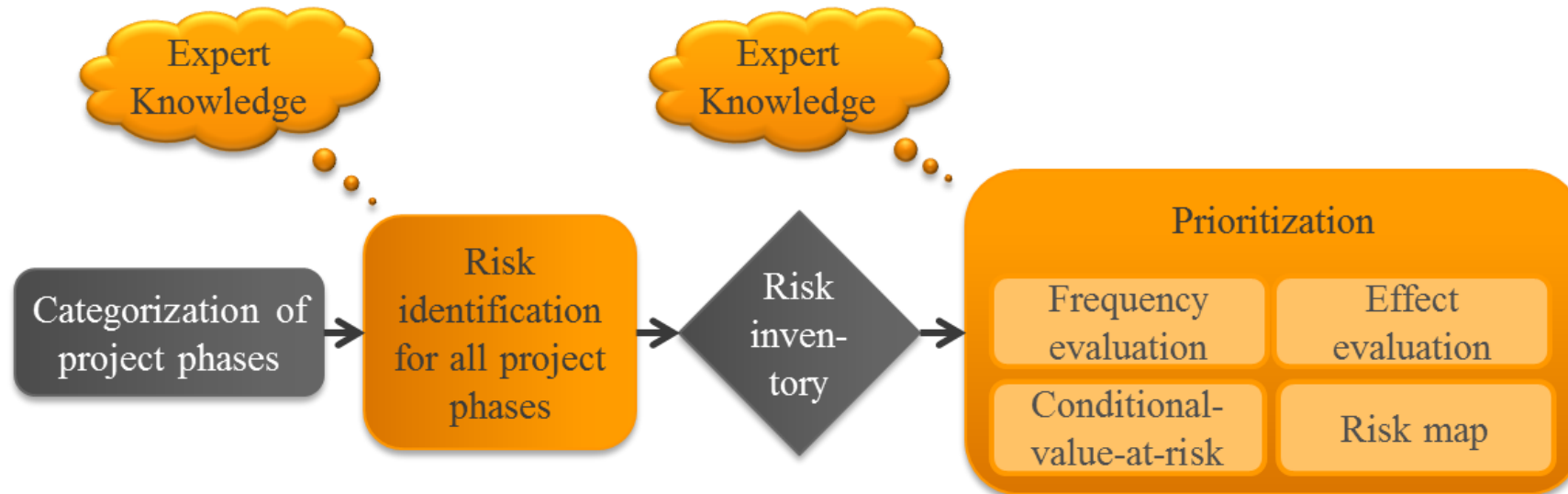
Electrical submersible pump (e.g. Bruchsal)



- Shorter service life
 - Motor below ground
 - Motor directly drives pump
 - ~ 1 year
- +** Cheaper than LSP
 - $CAPEX(P_{hydr}; z) = P_{hydr} * \{14,2 * p_{hydr}^{-0,319} + C_{cabel}(z) + C_{Pipe}(z)\}$
- +** No depth limits (< 1000 m)
- Lower efficiency
 - 50% - 60% (Welter, 2018)



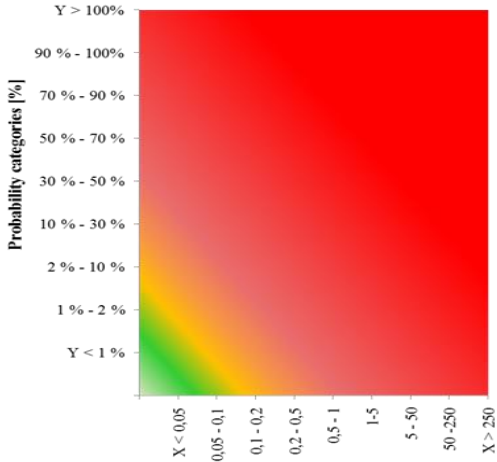
- Optimization of power plant
 - Monte-Carlo-Simulation instead of heuristic optimization
 - Pressure condenser outlet; Pressure feed pump outlet; Temperature superheater outlet; Recuperated energy
- Adaption of heat exchanger
 - Tube heat exchanger instead of plate heat exchanger
- Validation of power plant
 - Revision of superheating
 - Revision of condensator



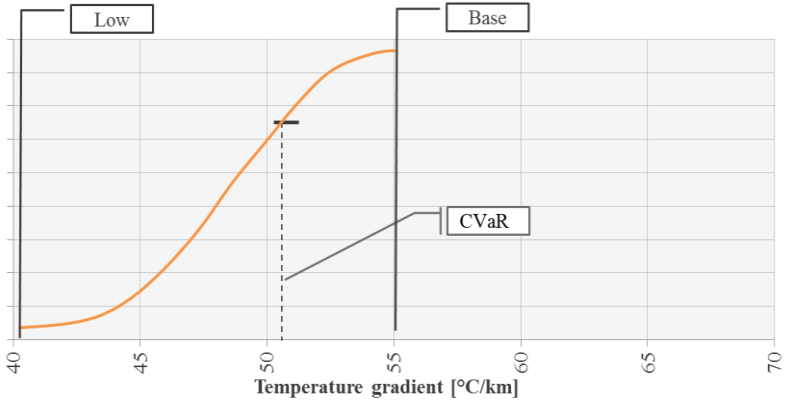
- › Expert interviews as data basis
 - Biased by subjectivity
 - Availability of data / Effort for data collection
- › Structured approach for identification of risk factors
- › Prioritization of risk factors
 - Fit-for-purpose modelling
 - Pre-selection before in-deep modelling

Prioritization - Continuous distributions in a risk map

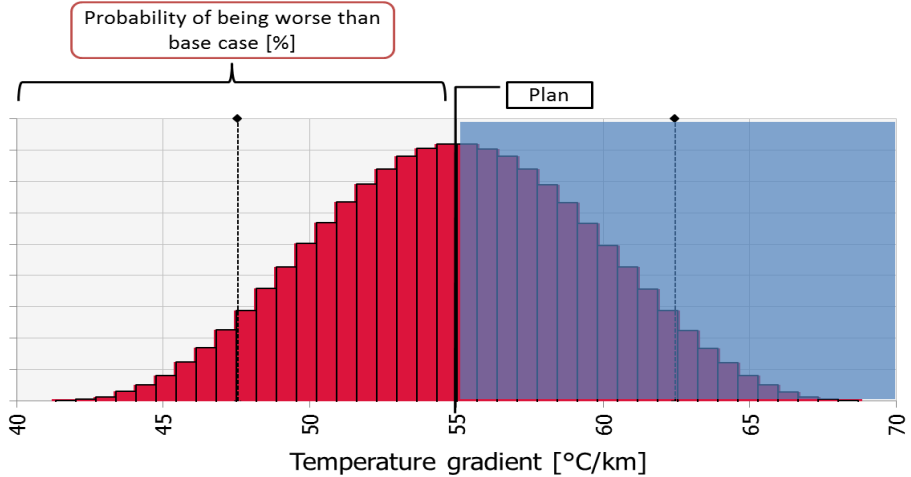
Risk map



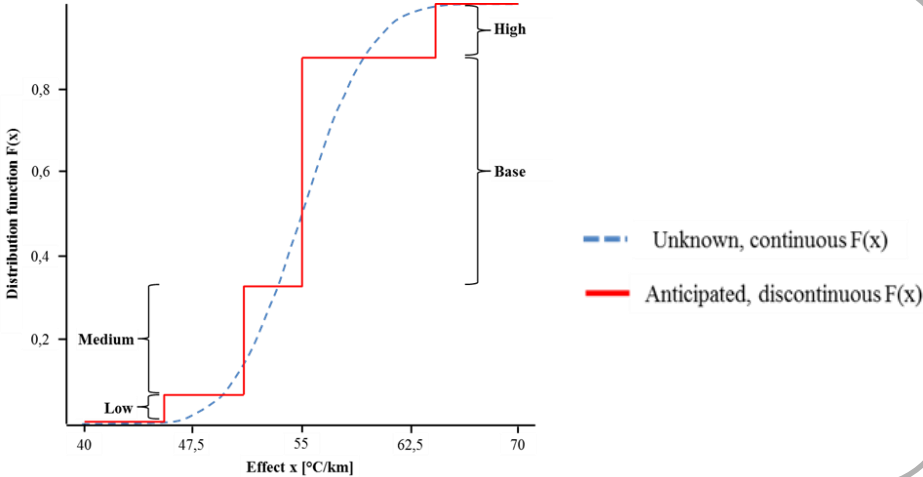
Conditional value at risk

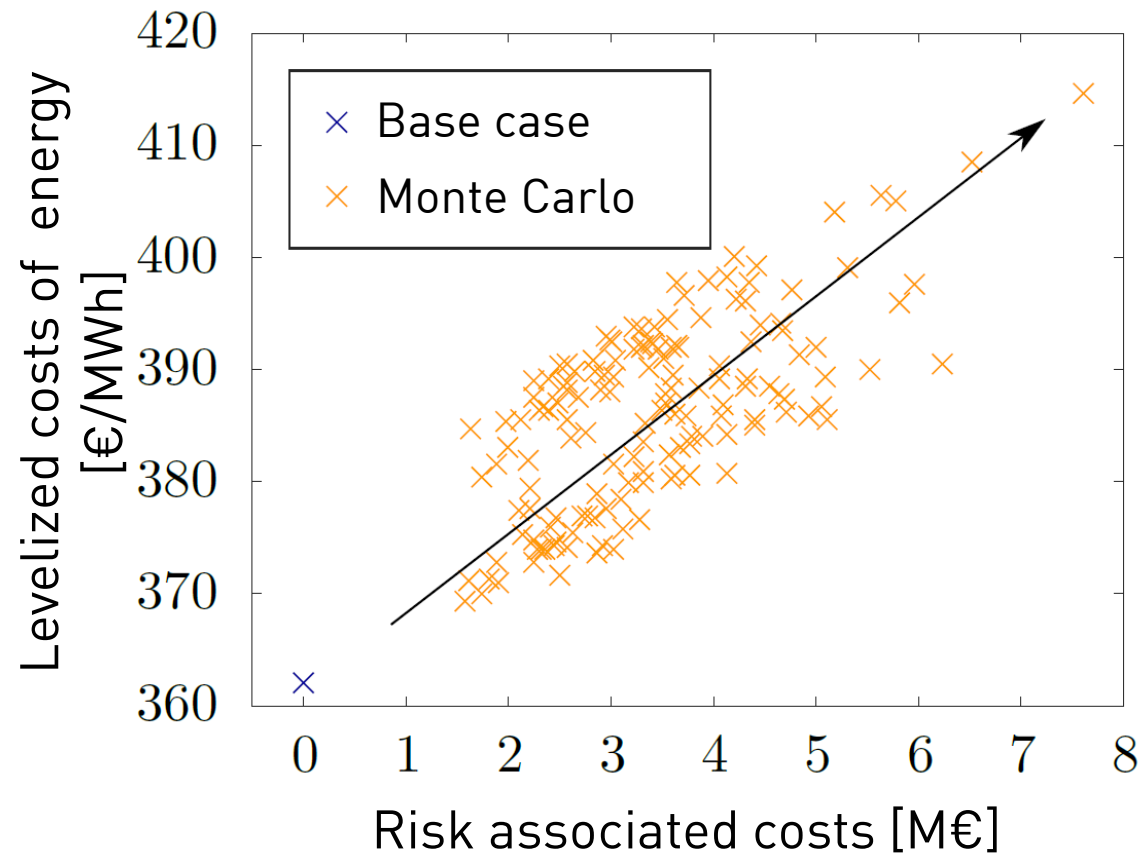


Binominal probability



Construction of PDF





Frame conditions

- › Electricity production, no heat
- › 150 iterations for risk factors

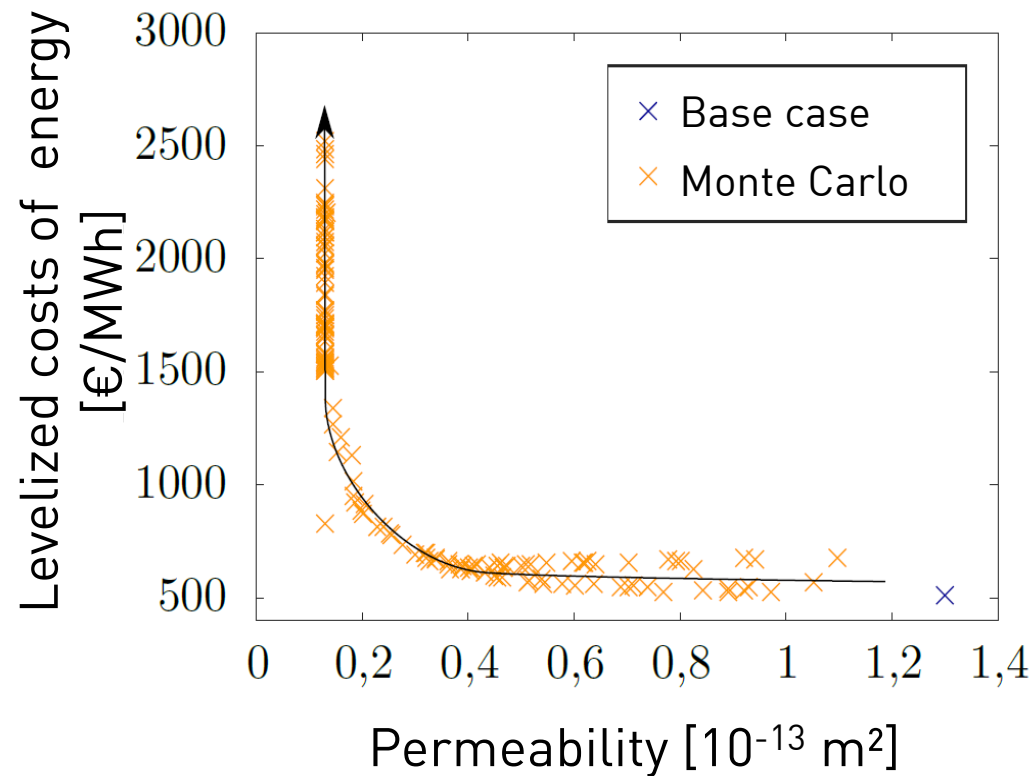
Technical frame conditions Soultz project

- › R&D character
 - Deep wells
 - High temperature losses
 - Low flow rate
- Economic LCOE were not a focus of project development

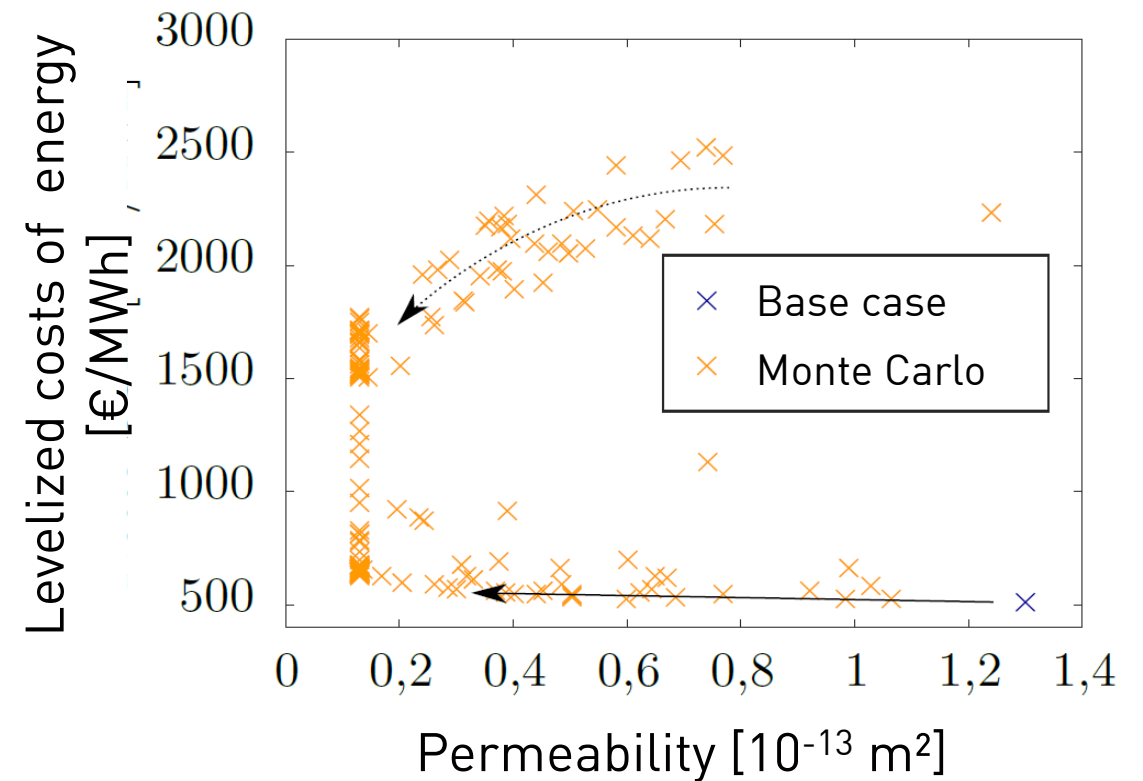
The risk associated costs show a linear influence on the LCOE

- › Find different modelling approaches?
- › Go rather for a technical implementation of risk factors?

Injection well



Production well





Research and development, Applied geology and geothermal energy

Sören Welter, Dorothee Siefert, Elif Kaymakci, Thomas Kölbel

Sören Welter
s.welter@enbw.com
+49 721 63-17890

Durlacher Allee 93
76131 Karlsruhe